

DOUBLE ROOF 265-6, 165 M²

Maale Efraim, MLEF-265-6

FIRST FLOOR

דגם ירדן
קומה -1
5 חדרים + מרפסת
שטח דירה 165 מ"ר



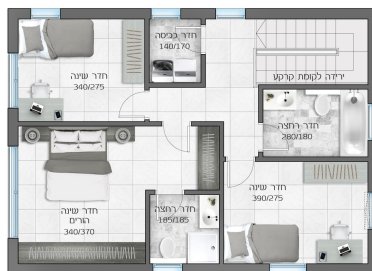
SECOND FLOOR

דגם ירדן
קומת כניסה
5 חדרים + מרפסת
שטח דירה 165 מ"ר



THIRD FLOOR

דגם ירדן
קומה 1
5 חדרים + מרפסת
שטח דירה 165 מ"ר



Property type

Two families with roof

PRICE

Rooms

5

₪ 2 080 000

Balcony

yes

Garden

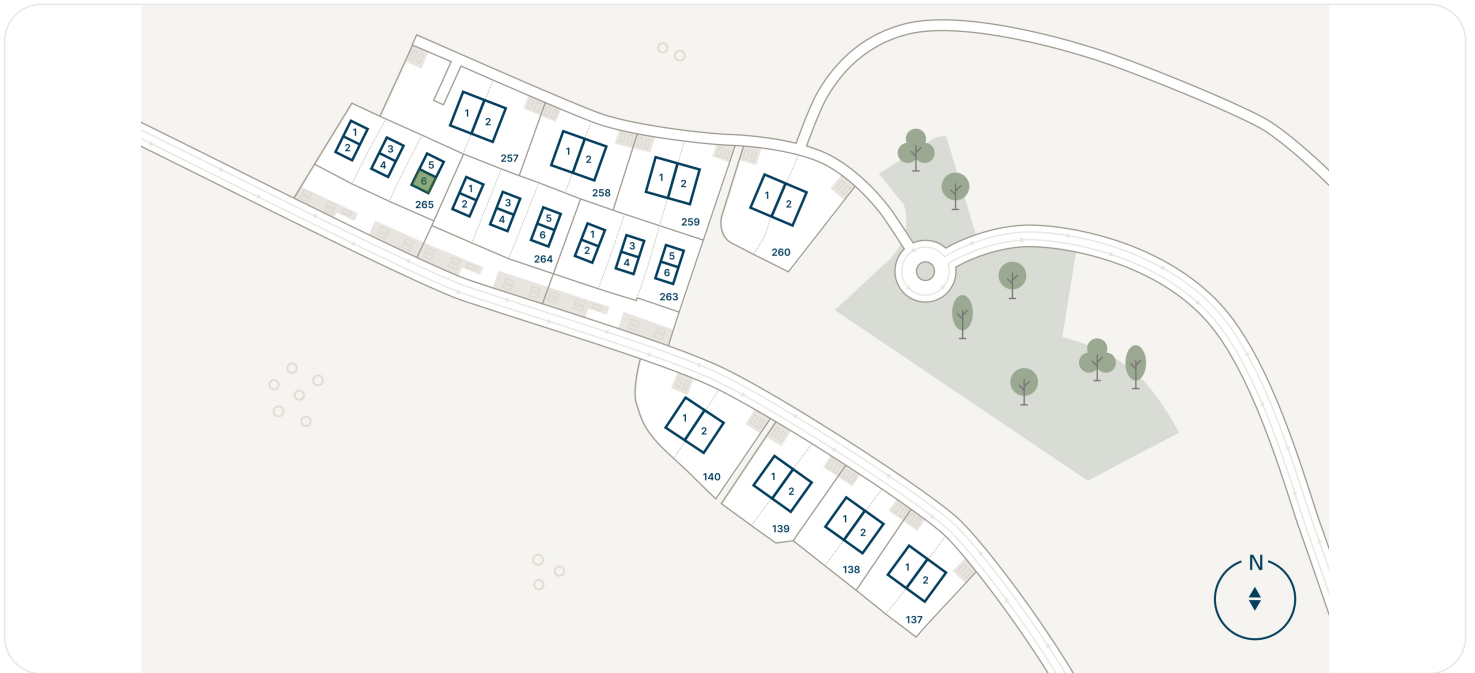
no

Planned delivery date

4Q 2027

08.07.2026

HOUSE LOCATION



EXTERIOR



We're proud to present our spacious duplex apartments: 160 square meters of carefully designed living space, available in two styles. Choose a garden duplex with a private yard (perfect for plant enthusiasts) or a rooftop duplex with a panoramic balcony (ideal for stargazers). These homes are offered at attractive prices that are only set to rise – an exceptional opportunity to invest smartly in a growing city with immense potential.

DOWNLOAD BROCHURE (PDF)

450

families live in this community

20

minutes by car from Ariel

34

residential units located here

2028

delivery date

CONTACTS



GIL STRAUSS

+16468094578 Gil@hzahav.co.il



CHECK OUT THE ASSET PAGE ON OUR WEBSITE

On the website you will see more detailed information about the lot, and you will also be able to leave a request for a consultation